

MARCH 2023 - LISBON



# SELMA NUNES "CERAMICS"



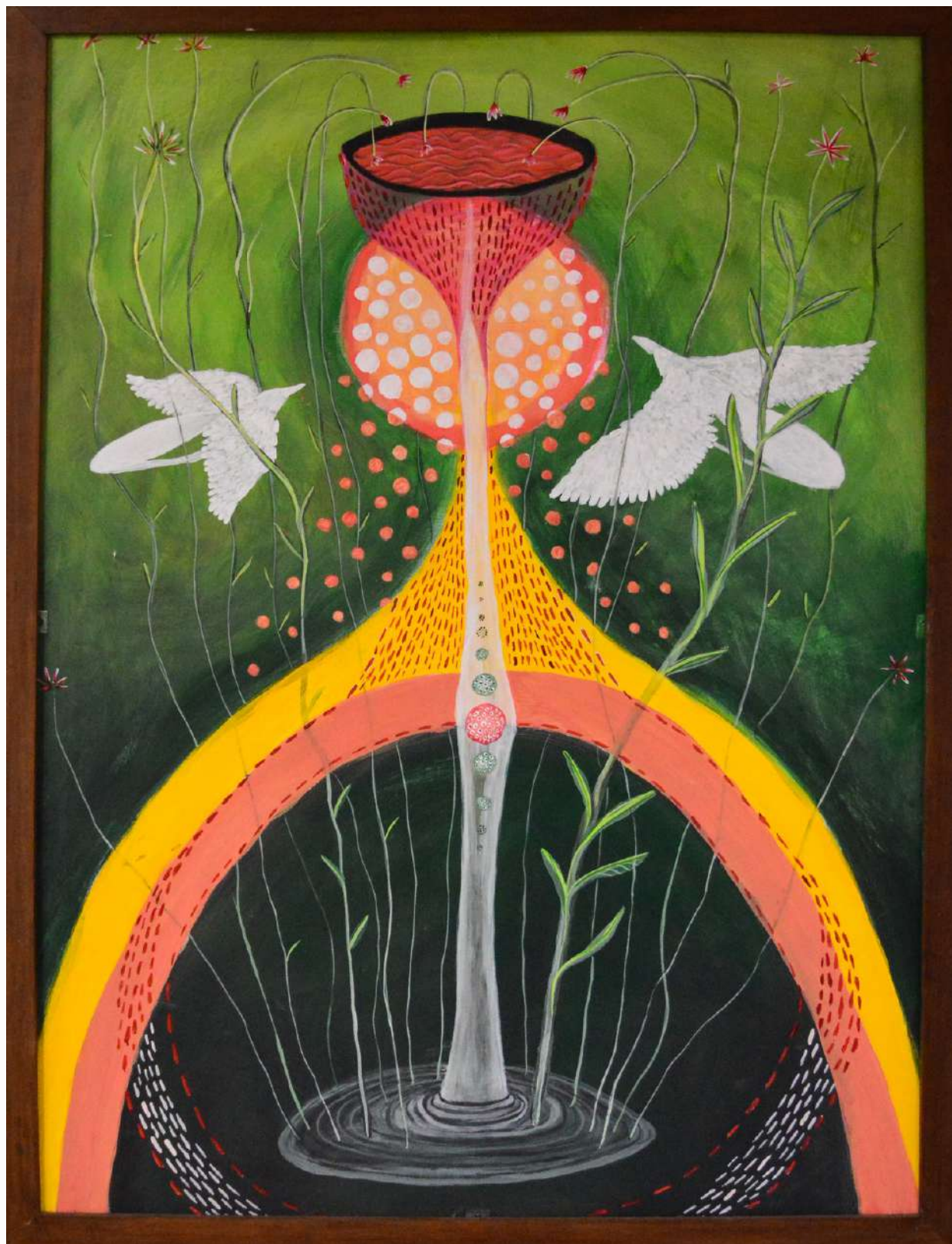


Exhibition "ceramics" by Selma Nunes  
(@selma.rosa.nunes) , 2 to 13 March.

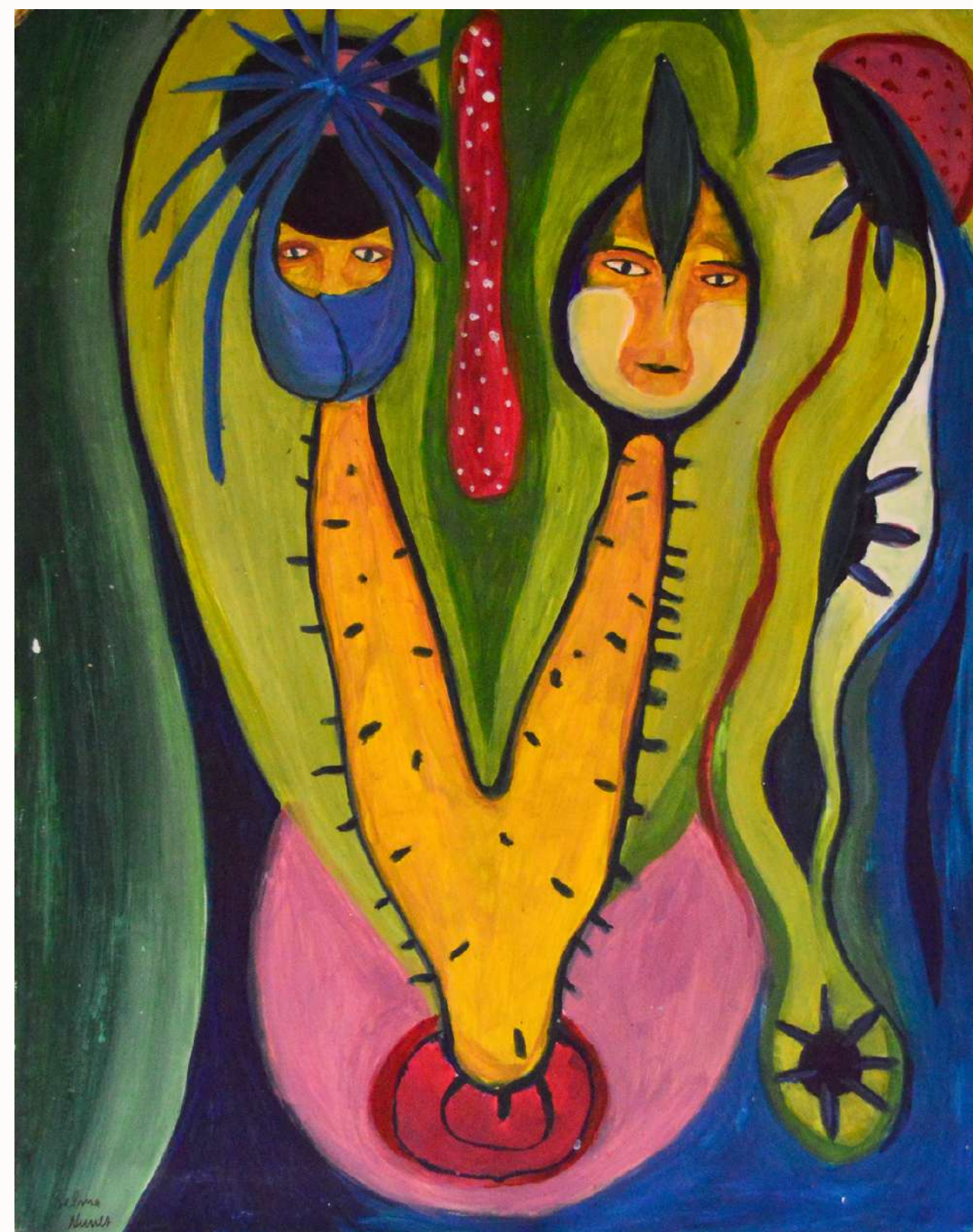
Amidst the passing years, a myriad of ceramic pieces have been crafted, dismantled, reimagined, and set in motion. A world of clay perpetually in flux, each day unveiling a new form of exhibition for all to behold.

Painting, writing, and exploring diverse materials, Selma Nunes sends forth the essence of her being, baring her dreams, fears, reflections, and the discovery of her soul. Through the interplay of colors, reliefs, and shapes, she creates connections that reflect her own interconnectedness - between self and the world, between self and others, between self and space, and ultimately, between self and self. In this process of exploration, she uncovers new facets of herself and the world around her.





UNTITLED  
50 x 40 cm  
Acrylics on paper, framed.



FALSA UNIÃO  
50 x 40 cm  
Acrylics on plywood.





CARA  
60 x 57 cm  
Acrylics on plywood.



UNTITLED  
50 x 40 cm  
Acrylics on plywood.

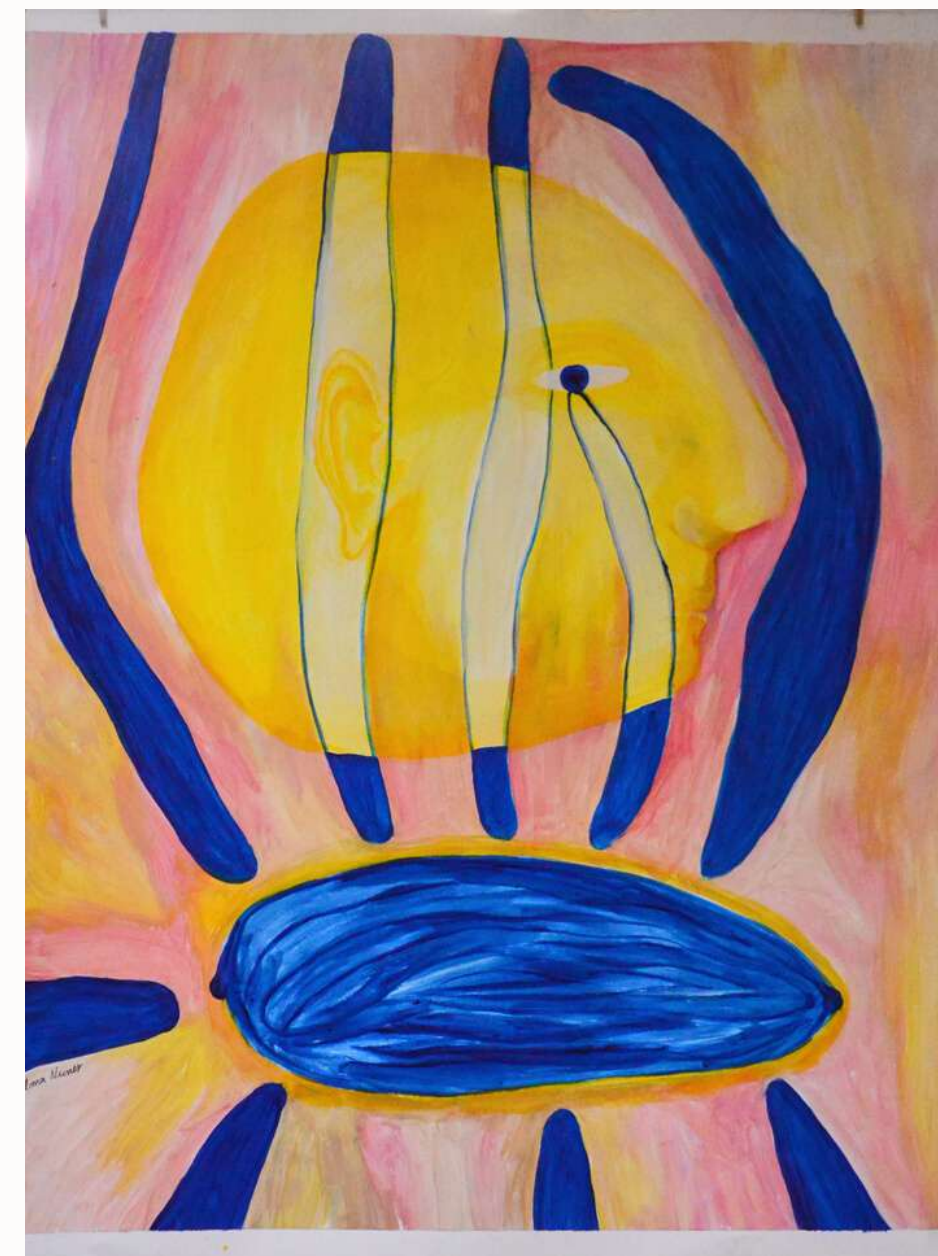




UNTITLED  
59.4 x 42 cm  
Acrylics on paper.



UNTITLED  
59.4 x 42 cm  
Acrylics on paper.



ÁGUA  
59.4 x 42 cm  
Acrylics on paper.





VIAGEM  
60 x 57 cm  
Acrylics on plywood.



UNTITLED  
50 x 40 cm  
Acrylics on plywood.





QUEM ÉS?  
100 x 63 cm  
Acrylics on plywood.





UMA VOZ  
60 x 50 cm  
Acrylics on plywood.



UNTITLED  
60 x 50 cm  
Acrylics on plywood.





DO OUTRO LADO  
90 x 73 cm  
Acrylics on plywood





HARMONIA NA DUALIDADE  
59.4 x 42 cm  
Acrylics on paper.



JOGO  
59.4 x 42 cm  
Acrylics on paper.

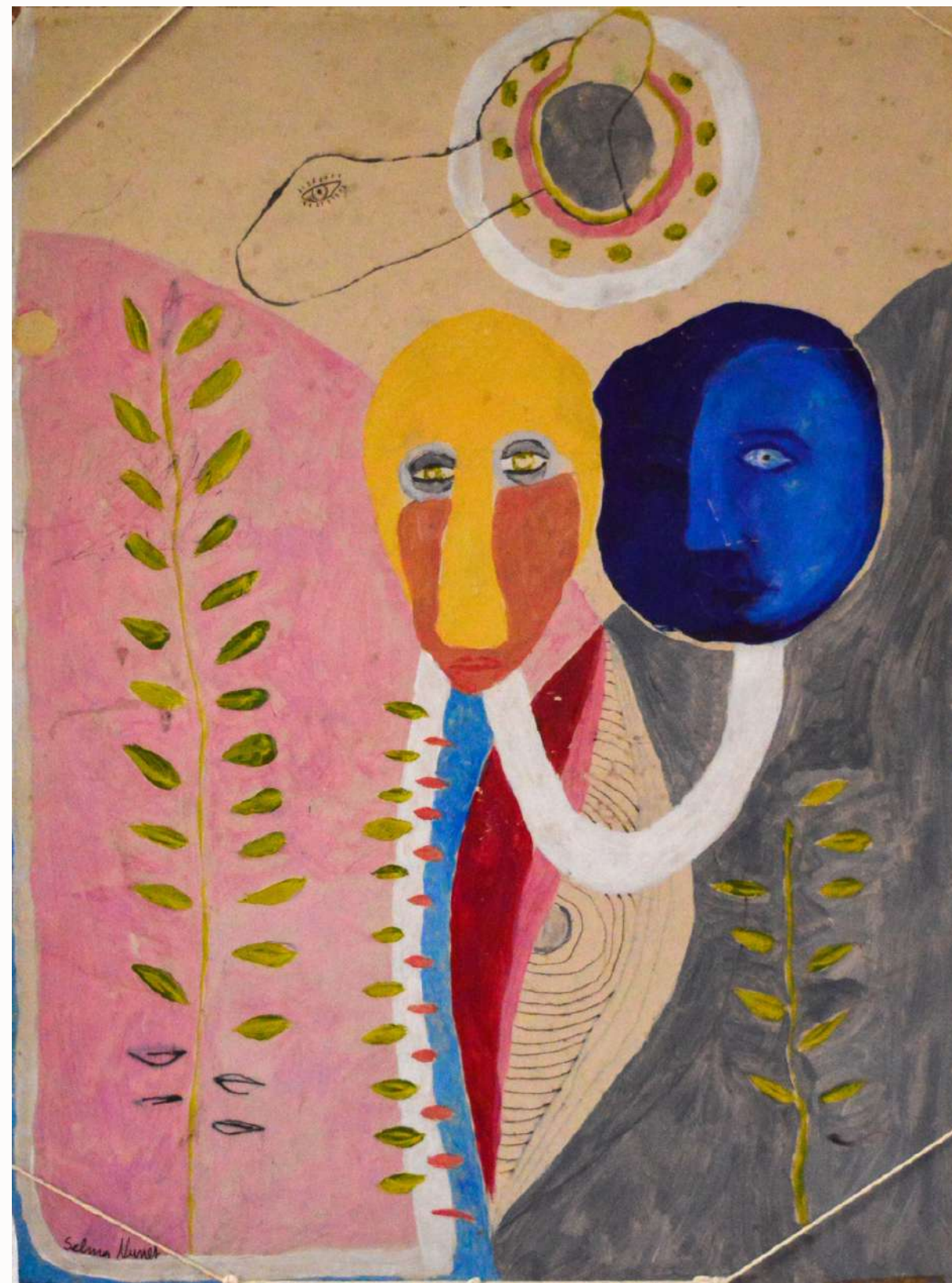


MENTE  
59.4 x 42 cm  
Acrylics on paper.





DENTRO  
45 x 33 cm  
Acrylics on plywood.



DESUNIÃO  
45 x 33 cm  
Acrylics on plywood.





SEMENTE  
110 x 100 cm  
Acrylics on  
plywood.





SELMA NUNES WORKS WITH A VARIETY OF CLAYS AND GLAZES TO CREATE HER UNIQUE PIECES OF ART. HER WORK IS HIGHLY SOUGHT AFTER AND EACH PIECE HAS ITS OWN DISTINCT DIMENSIONS AND SIZE. IF YOU ARE INTERESTED IN A PARTICULAR PIECE, YOU CAN CONTACT SELMA DIRECTLY BY REACHING OUT TO HER AT @SELMA.ROSA.NUNES. SHE WOULD BE MORE THAN HAPPY TO PROVIDE YOU WITH ANY ADDITIONAL INFORMATION YOU MAY NEED ABOUT HER CREATIONS.





















FACEBOOK

[@prismaestudiolx](#)

INSTAGRAM

[@prisma.lx](#)

PHONE NUMBER

[968 449 728](#)

EMAIL

[prismaestudiolx@gmail.com](mailto:prismaestudiolx@gmail.com)

WEBSITE

[prismalx.com](http://prismalx.com)

PHOTOGRAPHY / DESIGN:

Xristina Sayoğlu