

MARCH 2023 - LISBON



CARINA A. STIEFEL
" TOXIC - LOVELETTERS TO ADDICTION"





Carina A. Stiefel is a transdisciplinary artist, of Swiss-Brazilian descent, who has called Lisbon home since 2022. Their art is characterized by public performances that carry a powerful social message. At the heart of all their works is a deep connection to spirituality.

Currently her focus is on the power of one's own voice, from a scientific as well as an artistic point of view.

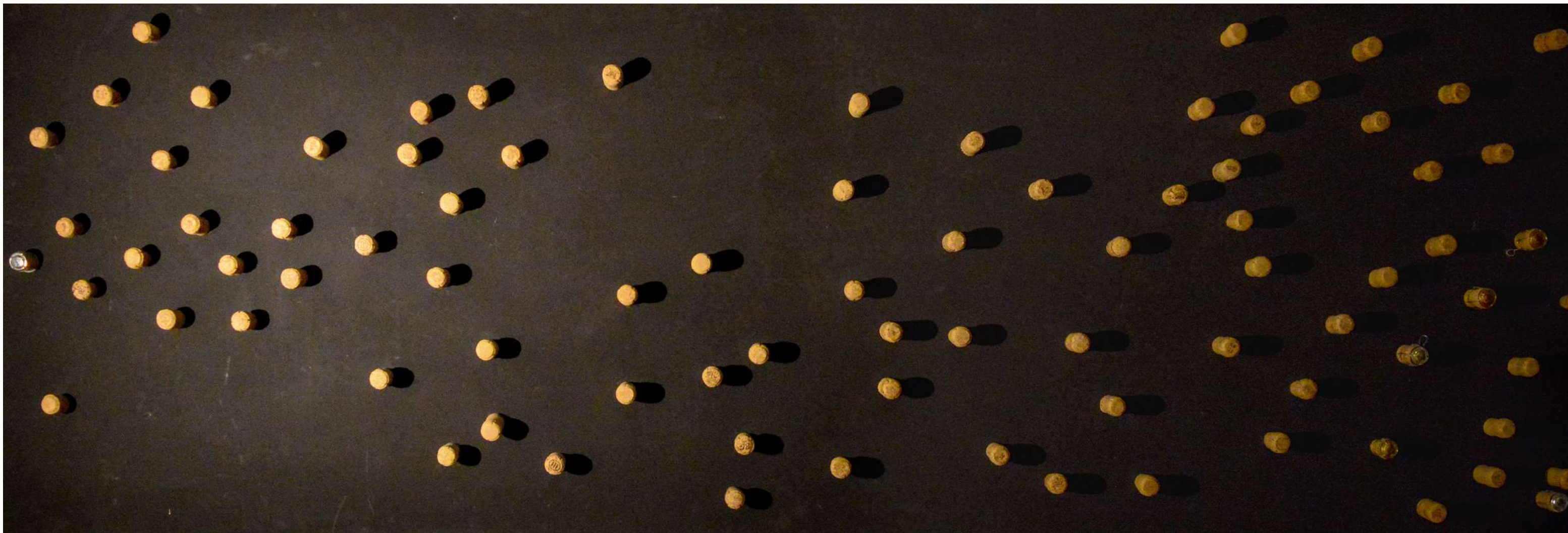
“Healing and transformation through creativity, then to create is our highest potential.”

We live in a world where we are ALL addicted.

Substances, technology, behaviors...

For the exhibition Carina A. Stiefel reduced it to the most common and obvious things, like alcohol, tobacco, coffee. These things are often marketed to us as sources of freedom and enjoyment, as they're easily accessible everywhere and at all times. This sense of freedom is misleading, and the exhibition reveals the ugly truth behind it. An exhibition resulting from scientific studies and a 44 minute performance that took place in Zurich October 2021.

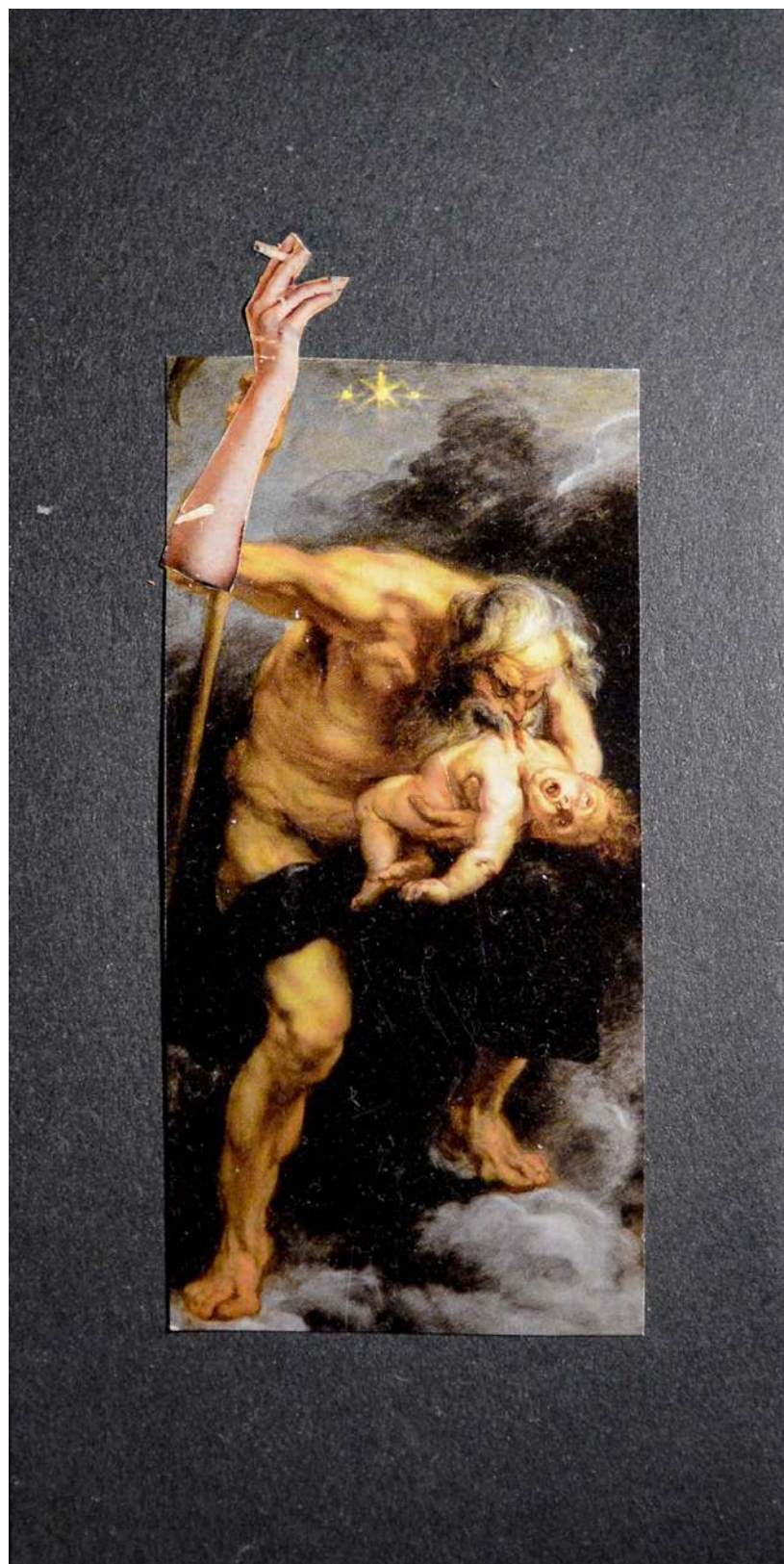
<https://carinastiefel.ch/work/>



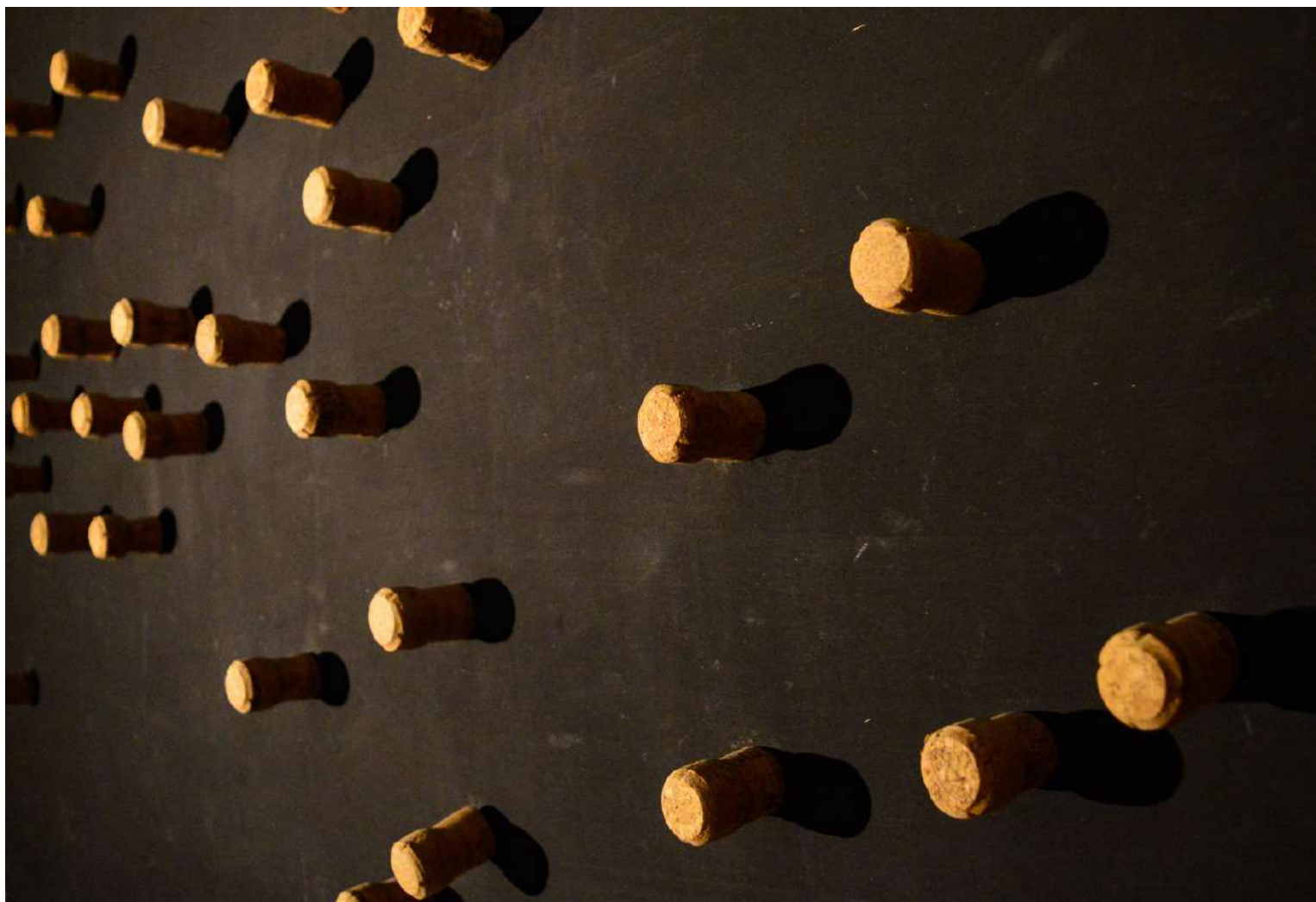
THE RESTING PLACE

252 x 83 cm

Wood panel, acrylic, champagne corks, screws



THE UGLY TRUTH ABOUT SMOKING; YOU SUCK YOU SUCKER
252 x 83 cm
Cardboard, paper, glue





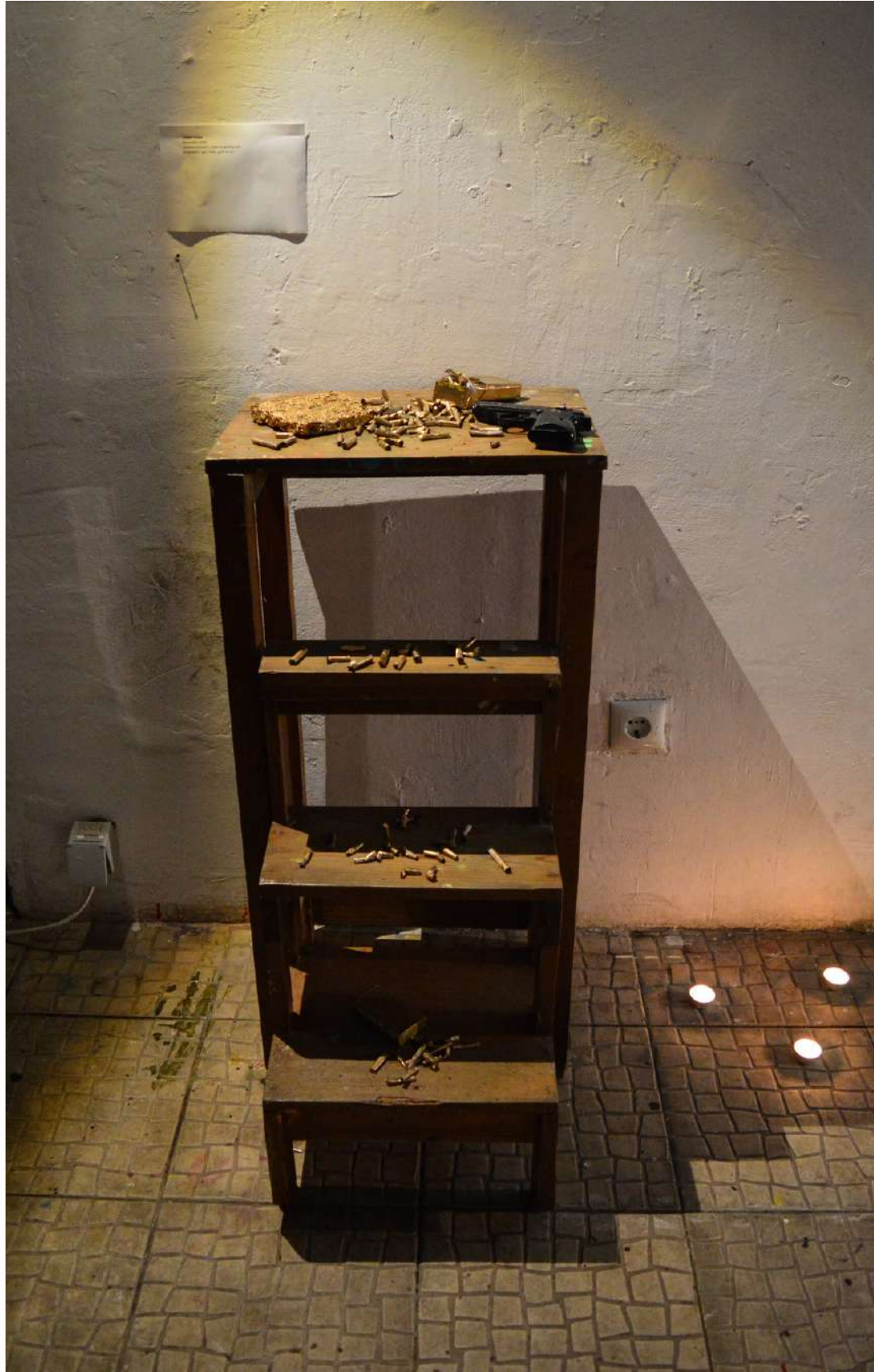
DOPERS WEEKLY NUTRITION
10.8 x 4 cm
Glass ashtray, joint-buds, tobacco,
papers, filters, epoxy resin



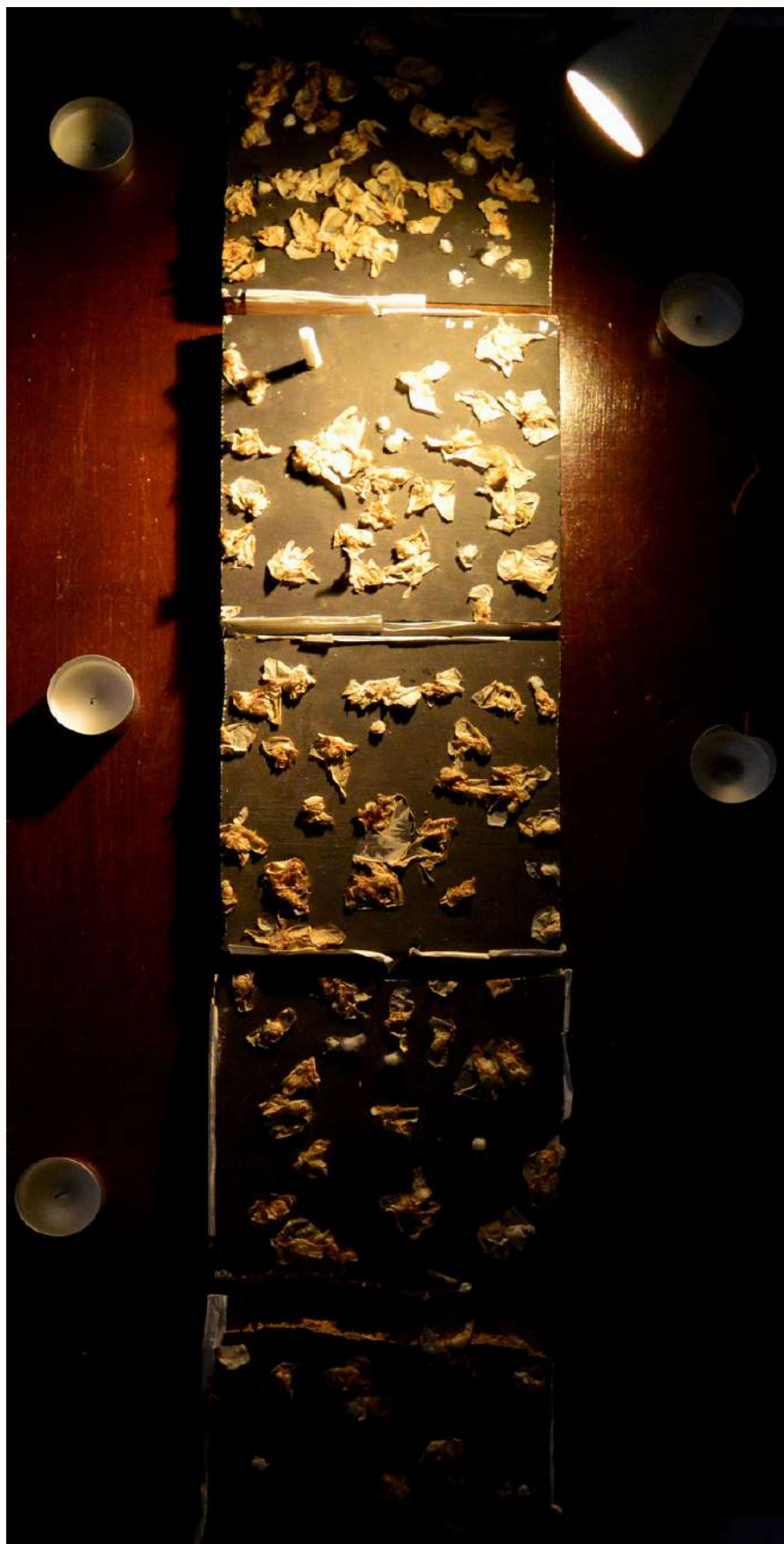
UNTITLED
116 x 26 cm
Wood panel, acrylic, corks



DEAD LOVE
18.2 x 0.5 cm
Dead roses, joint-buds, epoxy resin



GOLDEN TICKET
90 x 44 cm
Cardboard, paper, tobacco, acrylics
Installation: gun, buds



FAILED QUITTER
75 x 15 cm
Chipboard, acrylic, papers, filters, glue



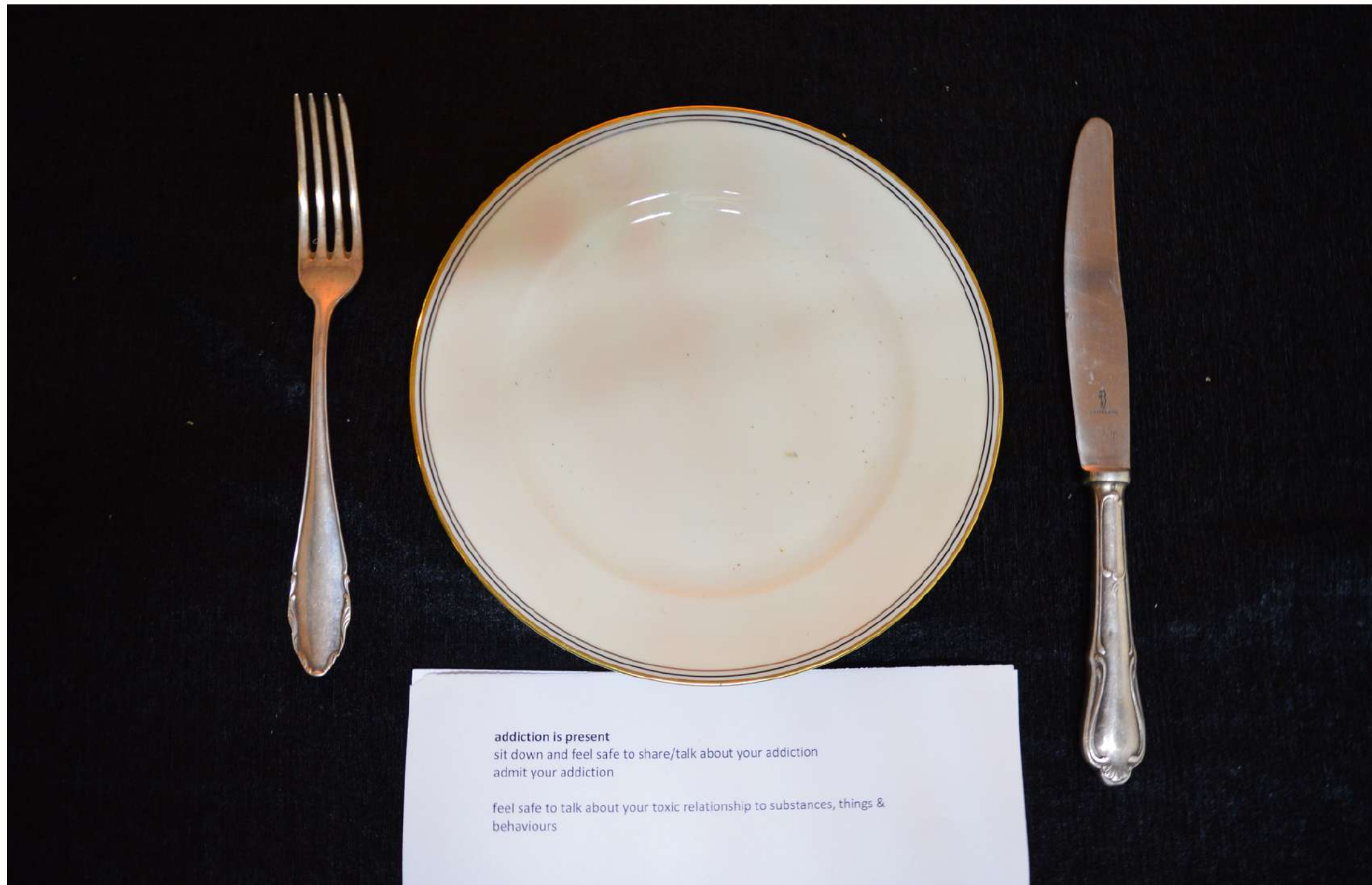
ADDICTION OVER LOVE
10.8 x 4 cm
Glass ashtray, cigarette-buds,
dead leaves, epoxy resin



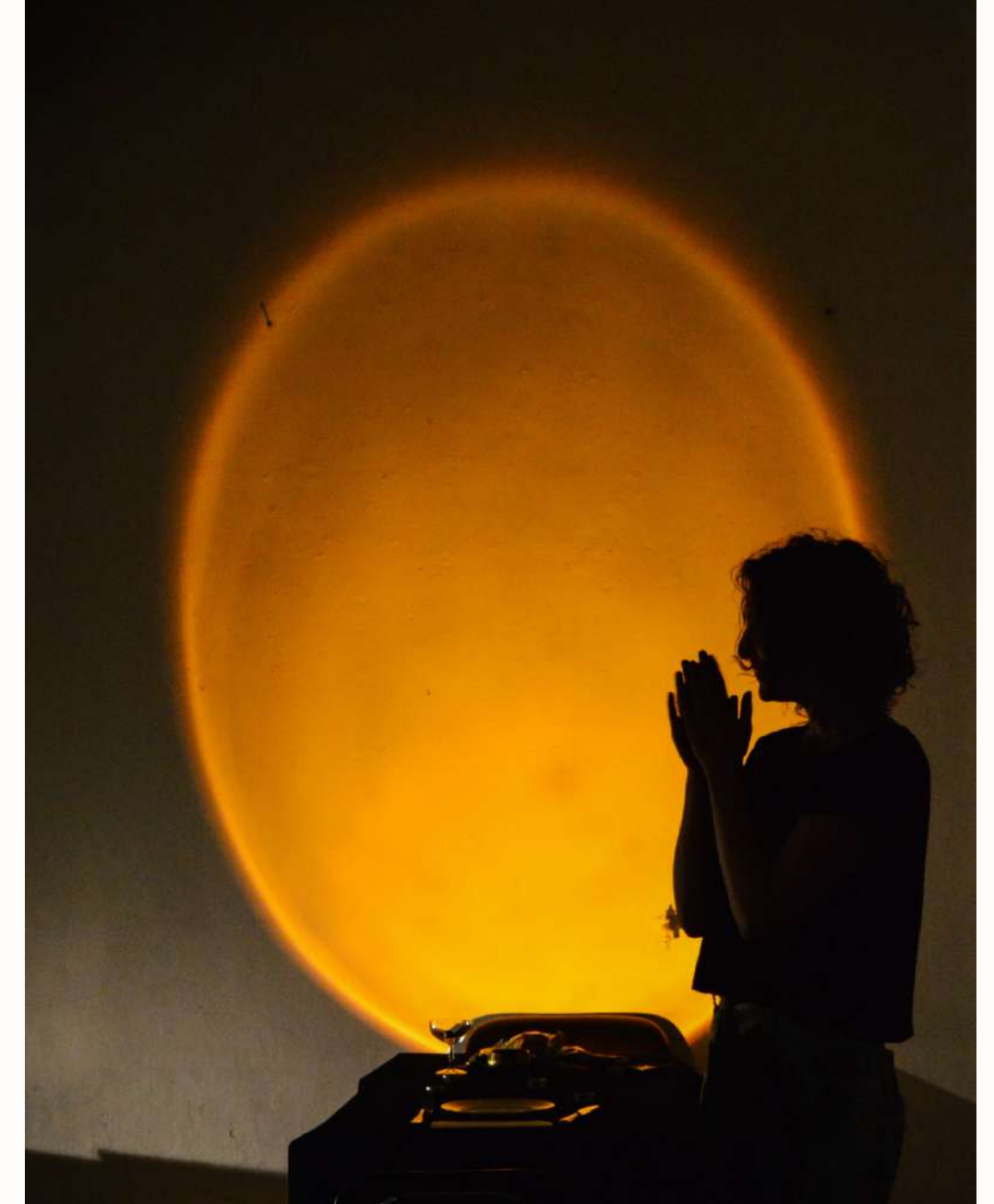
LAKE OF FIRE(COFFEE&CIGARETTES)
10.8 x 4 cm
Wood panel, acrylics, coffee, tabacco,
ash, matches, cigarettes&joint buds, filters



MASKS
(part of the performance)
Plaster, empty cigarette packs, glue



DAILY BREAD
(part of the performance)
Plate, fork, knife, tobacco



FACEBOOK

[@prismaestudiolx](#)

INSTAGRAM

[@prisma.lx](#)

PHONE NUMBER

[968 449 728](#)

EMAIL

prismaestudiolx@gmail.com

WEBSITE

prismalx.com

PHOTOGRAPHY / DESIGN:

Xristina Sayoğlu